

OTWAYS

Walks & Waterfalls Map

From walking trails to hidden forest retreats, the Otways is a place for adventure, romance and discovery.

Whether you go inland or hug the rugged coast, the Otways is filled with natural beauty and history.

WALKS & WATERFALLS LOOP

This stunning loop drive takes in Apollo Bay, Cape Otway, Lavers Hill, and Beech Forest.

Possible stops include the Cape Otway Lightstation, Great Otway National Park, Otway Fly Treetop Adventures, waterfalls, a Californian Redwood Forest and rainforest walks.

For all our walks please see the other side of this map!



Hopetoun Falls

VOLCANIC PLAINS LOOP

The area north of Colac is famous for its volcanic past.

Visit both east and western lookouts at Red Rock to view the vast volcanic plains, dormant craters and crater lakes of Kanawinka world listed Geopark.



Volcanic Plains
www.kanawinkageopark.org.au

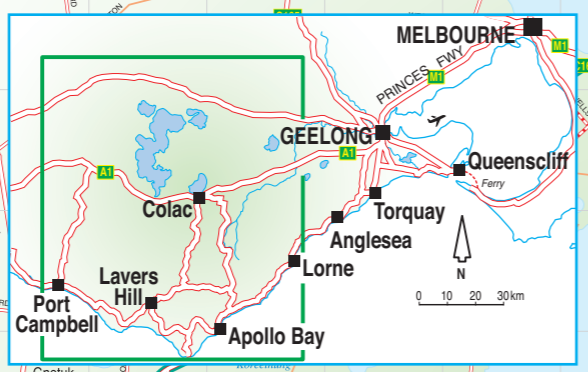
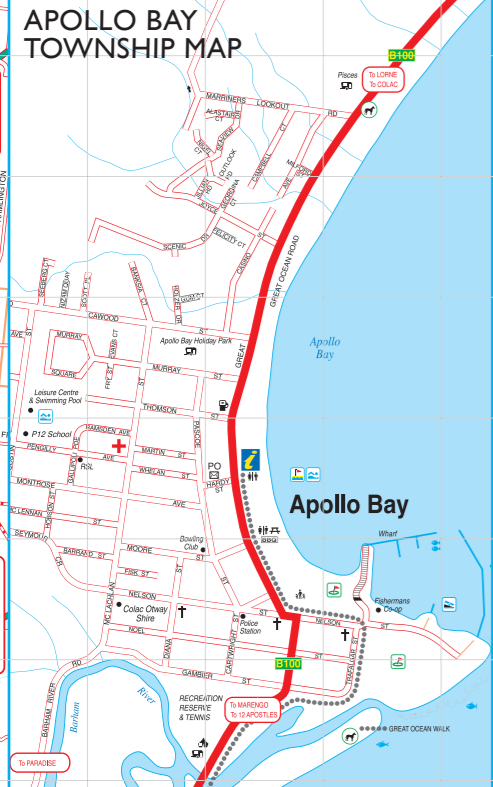
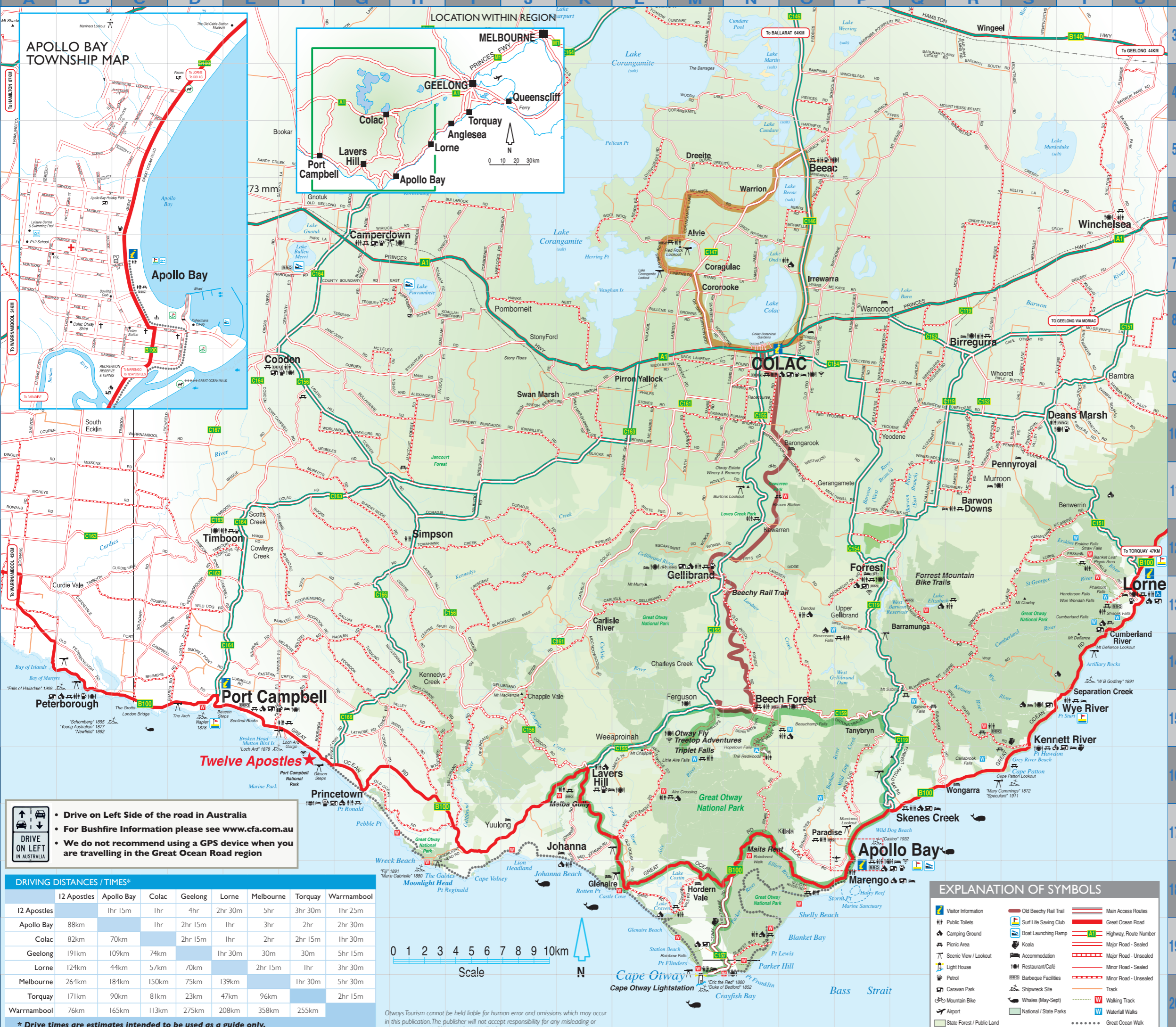
ACCREDITED VISITOR INFORMATION CENTRES

Great Ocean Road Visitor Information Centre
100 Great Ocean Road, Apollo Bay
Open 9am - 5pm, 7 days a week
P: 1300 OTWAYS (689 297)
E: gorvic@colacotway.vic.gov.au

Colac Visitor Information Centre
Cnr Queen & Murray Sts, Colac
Open 9am - 5pm, 7 days a week
P: 1300 OTWAYS (689 297)
E: colacvic@colacotway.vic.gov.au

Visit us: www.visitapollobay.com www.visitotways.com

Share your experience with us!
#iamapollobay #iamotways



Drive on Left Side of the road in Australia
 For Bushfire Information please see www.cfa.com.au
 We do not recommend using a GPS device when you are travelling in the Great Ocean Road region

DRIVING DISTANCES / TIMES*	12 Apostles	Apollo Bay	Colac	Geelong	Lorne	Melbourne	Torquay	Warrnambool
12 Apostles		1hr 15m	1hr	4hr	2hr 30m	5hr	3hr 30m	1hr 25m
Apollo Bay	88km		1hr	2hr 15m	1hr	3hr	2hr	2hr 30m
Colac	82km	70km		2hr 15m	1hr	2hr	2hr 15m	1hr 30m
Geelong	191km	109km	74km		1hr 30m	30m	30m	5hr 15m
Lorne	124km	44km	57km	70km		2hr 15m	1hr	3hr 30m
Melbourne	264km	184km	150km	75km	139km		1hr 30m	5hr 30m
Torquay	171km	90km	81km	23km	47km	96km		2hr 15m
Warrnambool	76km	165km	113km	275km	208km	358km	255km	

* Drive times are estimates intended to be used as a guide only.

Otways Tourism cannot be held liable for human error and omissions which may occur in this publication. The publisher will not accept responsibility for any misleading or deceptive material. GSDM 11261 JUNE 13.

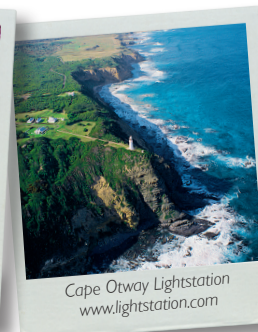
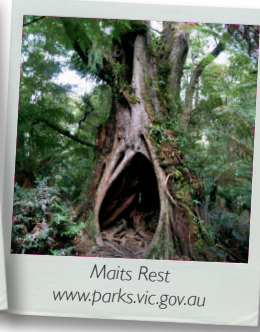
EXPLANATION OF SYMBOLS

Visitor Information	Old Beech Rail Trail	Main Access Routes
Public Toilets	Surf Life Saving Club	Great Ocean Road
Camping Ground	Boat Launching Ramp	Highway, Route Number
Picnic Area	Koala	Major Road - Sealed
Scenic View / Lookout	Accommodation	Major Road - Unsealed
Light House	Restaurant/Cafe	Minor Road - Sealed
Petrol	Barbecue Facilities	Minor Road - Unsealed
Caravan Park	Track	Walking Track
Mountain Bike	Shipwreck Site	Waterfall Walks
Airport	Whales (May-Sept)	Great Ocean Walk
State Forest / Public Land	National / State Parks	

Walks & Waterfalls

Walk Waterfall

NAME	DESCRIPTION	FEATURES & FACILITIES	WALKS DIFFICULTY RATING	TIME / DIST.	START POINT	MAP REF.	DISTANCE FROM APOLLO BAY	COLAC
Great Ocean Walk	Weave your way through tall forests, coastal heathlands, beside wild rocky shores and along windswept clifftops with amazing views. Hike up to eight days or choose a day walk along this incredible one direction walk from Apollo Bay to the Twelve Apostles. For more information www.greatoceanwalk.com.au		Moderate	104km	Apollo Bay Foreshore	P18-F16	-	70km
APOLLO BAY								
Apollo Bay Foreshore Walk	Gravel footpath from Marengo through to Wild Dog Beach taking in the interesting wooden sculpture trail along the Apollo Bay Foreshore. Sculpture brochure available from the Visitor Information Centre.		Easy to Moderate	1 hr / 5.5km One way	Marengo Carpark	P18	3km	70km
Marriners Lookout	Short but steep walk to lookout for spectacular views. No dogs, buses, caravans/campervans or camping. Please respect this private property.		Easy to Moderate	20 mins / 1km Return	Top of Marriners Lookout Road	P17	2km	70km
Marengo to Shelly Beach	Follow low cliff tops overlooking the ocean and climb the exposed and aptly named Bald Hill. This walk takes you onto the beach and through sheltered forest, to picturesque Shelley Beach. Only take alternative coastal routes at low tide and during calm seas. For more information visit: www.greatoceanwalk.com.au		Moderate to Difficult	2 hrs / 4.7kms One way	Marengo Carpark	P18	3km	70km
Shelly Beach Loop	From the carpark, descend through cool gullies and coastal scrub to Shelly Beach. Veer right at Three Creeks Track junction and step down to the beach. From there turn right along the rock platforms and follow the coast to Elliot River. A steep climb up Elliot River Track returns to the carpark.		Moderate	45 mins / 2km Return	Shelly Beach Picnic Area via Elliot River Rd	O19	9km	79km
Three Creeks Loop	Starting at the picnic area, descend towards Shelly Beach. Turn left at the Three Creeks junction and walk through coastal scrub taking in ocean views to Three Creeks Beach. If conditions are suitable, loop back around the point and access steps back onto the original track.		Moderate	1.5hrs / 3km Return	Shelly Beach Picnic Area, via Elliot River Road	O19	9km	79km
Elliot River Loop	A moderate grade walk featuring river, forest and ferns. Start from the carpark and follow the Elliot River Track down to the mouth of the Elliot River, crossing carefully on the stepping stones. Climb up the ridge along the track, passing through stands of Blue gum and areas of tall Eucalypt forest. Return to Shelly Beach Picnic Area via the management vehicle track.		Moderate	2 hrs / 4km Return	Shelly Beach Picnic Area, via Elliot River Road			
Maits Rest Rainforest Walk	Named after former forestry patrol officer Maitland Bryant, Maits Rest has a short walk that meanders through a tranquil fern garden, past huge moss-covered trees. Some are up to 300 years old! A wooden boardwalk protects the delicate ecosystem whilst providing visitors with a unique view of the forest. Glow Worm walk at night.		Easy	30 mins / 1km Loop	Maits Rest Carpark	N18	16km	86km
BEECH FOREST, LAVERS HILL								
California Redwoods	Breathtaking forest full of Giant Californian Redwoods (Sequoia trees) planted in 1930s originated from Northern California.		Easy	10 mins Return	Aire Valley Picnic Ground (near Binns Road turnoff)	N16	45km	44km
Beauchamp Falls	Walk passes through softwood plantation forest, along a river to discover magnificent Mountain Ash, Myrtle Beech, Blackwoods and lush ferns. Free camping area - Otway Forest Park with basic pit toilet facilities, picnic tables & fireplaces. Managed by DELWP call 136186 or www.delwp.vic.gov.au		Moderate to Difficult	1 hr Return	Beauchamp Picnic Area, Via Binns Road	O16	45km	44km
Hopetoun Falls	Walk to the viewing platform 20 metres from the carpark, or walk down stairs through glades of tree ferns to the falls.		Moderate	30 mins Return	Hopetoun Falls Reserve, Binns Road	N16	45km	44km
Beechy Rail Trail	Experience scenic forests, rich farmland, rolling hills & birdlife along the original path of the historic narrow gauge railway "The Beechy". For more information www.railtrails.org.au		Moderate	49.2km One Way	-	N9-N15	-	-
Otway Fly Treetop Adventures	Open daily (closed Christmas Day) 9am-5pm (last entry 4pm, winter open from 10am). Fees apply. Discounted tickets available through local Visitor Information Centres. Otway Fly Treetop Adventures takes your rainforest experience to new heights in the lush surrounds of the magnificent Otway Ranges. Whether you're soaking up the breath-taking birds-eye view on the Treetop Walk or soaring through the leafy treetops on the Zipline Tour, there's something for the whole family to enjoy. For more information visit: www.otwayfly.com		Easy to Moderate	1 hr / 2.5km Return	Otway Fly Carpark, Phillips Track	M16	45km	44km
Triplet Falls	Walk along raised platforms through ancient rainforest to view the awesome triple cascades thundering over rock ledges. This walk also passes by an original sawmill site.		Moderate	1hr / 2km Loop	Triplet Falls Carpark, Phillips Track	M16	48km	44km
Little Aire Falls	This walk leads off the Triplet Falls track and passes through spectacular rainforest along an old logging winch line. View the falls from an eight metre platform.		Moderate	2.5 hrs / 2.5km Return	Triplet Falls Carpark, Phillips Track	M16	48km	44km
Melba Gully	A stunning loop walk through dense rainforest of Myrtle Beech, Blackwood and tree ferns alongside a bubbling creek. Some of the best Glow Worm night viewing in the area.		Moderate	35 mins / 1.2km Loop	Melba Gully Carpark	K17	58km	58km
The Gables Lookout	This great short walk travels through coastal heath, woodland and thick Casuarina forest before arriving at a lookout with spectacular views of some of Australia's highest sea cliffs.		Easy	20 mins / 800m Return	The Gables Carpark Via Moonlight Head Rd	H18	63km	71km
Wreck Beach	Descending over 360 steps from carpark area, turn right once on the beach. Explore the beach, rock ledges and the anchors of the Marie Gabrielle & Fiji shipwrecks when tide and sea conditions are suitable.		Difficult	90 mins / 2km Return	Wreck Beach Carpark via Monlight Head Rd	H18	63km	71km
BEEAC, BIRREGURRA, COLAC, CRESSY								
Beeac Heritage Walk	Discover historic churches, buildings and businesses in the quaint village of Beeac. A highlight includes the Beeac Windmill Park commemorating the area's agricultural heritage. Pick up a guide from the Visitor Information Centre.		Easy	1.5 hrs Return	65 Main St, Beeac	O6	83km	19km
Birregurra Heritage Walk	Discover historic churches and buildings in the scenic Birregurra township. Other highlights include the towns timber industry and sporting historical connections.		Easy to Difficult	35min / 1.7km Return or 80mins / 3.4km Return	Birregurra Public Carpark	Q9	63km	20km
Colac Botanic Gardens	A leisurely stroll through 12 hectares of one of Victoria's most unique regional gardens, with stunning views of Lake Colac. Botanic café is open from 10am.		Easy	15 mins / 1.2km Return	Main Entrance, Gellibrand Street	N9	70km	
Cressy Discovery Trail	A traditional country town. Wander through this historical farming town settled in the 1830's with quaint churches and strong links to the old Victorian Railways.		Easy	1 hr Return	Community Hall, Cressy	O3	102km	38km
Lake Colac Foreshore	One of Victoria's largest fresh water lakes, this walk includes shared & informal paths taking in the Lake Colac Bird Reserve along the southern foreshore of Lake Colac.		Easy	1.5 hrs / 6km Loop	Lake Colac Bird Reserve, Church Street	N9	70km	
Red Rock Scenic Lookout	A ground-level viewing platform or a short stair climb to the top of a dormant volcanic crater complex, on a clear day you can see Lake Corangamite - Australia's largest permanent saline lake.		Moderate	15 mins Return	Red Rock Volcanic Scenic Lookout	M7	85km	15km
CAPE OTWAY								
Blanket Bay to Parker Hill	A diverse walk through coastal forests and grass trees, in and out of gullies before descending to beautiful Parker Inlet. Two lookouts along the way provide wonderful ocean and estuary views.		Moderate	2 hrs / 4km One way	Blanket Bay Campground	N19	30km	94km
Cape Otway Lightstation	Open daily (closed Christmas Day), 9am-5pm (last entry 4:30pm). Fees apply. From the deck of the 1848 lighthouse experience the heart pounding thrill and awe-inspiring views 80m above the Southern Ocean. Discounted tickets available through local Visitor Information Centres. For more information visit: www.lightstation.com		Easy	45 mins / 1km Return	Lighthouse Precinct via Otway Lighthouse Rd	M20	30km	94km
Lightstation Cemetery & Lookout	From the lightstation carpark follow the gravel footpath west for approx. 10 min to Paynters Hill for a distant view of the lighthouse. Continue over the hill and off to the right for about another 10 min to explore the cemetery.		Easy	40 mins / 2.8km Return	Cape Otway Lightstation Carpark	M20	30km	94km
Aire River Escarpment Lookout	From the Aire River Bridge follow the track through the coastal scrub to the Lookout for spectacular views over the heritage listed river mouth and wetlands.		Moderate	2 hrs / 4.2km Return	Aire River bridge via Hordern Vale Rd	L19	28km	84km
FORREST								
Forrest History Walk	This Otways township enjoys a rich history of the timber and agriculture industries. The walk is lined with 27 interpretative plaques dotted around the town.		Moderate	1 hr / 2km Return	Forrest Township	P13	38km	32km
Lake Elizabeth	The one hour return walk ambles alongside the river and a billabong to the lake or an extended two hour walk loops the entire lake. A colony of platypus resides here, tread lightly and you may see some.		Easy to Moderate	1 hr - 2 hrs 2-4km Return	Lake Elizabeth Carpark via Kaanglang Rd	Q14	38km	32km
Tiger Rail Trail	The Tiger Rail Trail is now an easy ride and beautiful walk that passes through rich fertile farm lands and spectacular Mountain Ash forest.		Easy	1 hr / 2hrs 5km Return	Forrest Township	P13	38km	32km
West Barwon Reservoir	Take a cool climate rainforest walk or take the path from the picnic area and explore the waterways. Excellent views from the dam wall over the reservoir.		Easy	20 mins / 400m Return	West Barwon Reservoir	P13	38km	32km
Stevensons Falls	A 1.5 hr return (4.6km) walk from campground, or shorter walk return (500m) available from day car park via second bridge. Free camping area - Otway State Forest with basic pit toilet facilities, picnic tables & fireplaces. Managed by DELWP call 136186 or www.delwp.vic.gov.au		Easy	20 mins / 1.5 hrs Return	Stevensons Campground, Upper Gellibrand Rd	O14	34km	44km
KENNETT & WYE RIVER								
Kennett River Nature Walk	Reconnect with nature on this self-guided walk along the banks of the Kennett River. Learn about local wildlife and history, and spot native birds and animals, including kangaroos in the early morning and at dusk.		Easy	20 mins / 400m Return	Kennett River Picnic Area	S16	22km	82km
Grey River Road Rainforest Walk	Lose yourself amid the towering trees on the short rainforest walk from the bridge, or visit in the evening to see the enchanting glow worms come to life on the roadside embankments near the picnic area.		Easy	1 hr / 1km Return	Grey River Picnic Area	S16	22km	82km
Wye to Sep Walk and Paddy's Path	Enjoy the rock ramble and see the historic remnant tram rails, see the 3 large rock pools at low tide. Return via Paddy's Path, the old timber route, with picturesque views over Wye River and Separation Creek.		Easy to Moderate	40 mins / 2km Return	Wye River Foreshore Picnic Area	T15	28km	87km
The Wye River Walk	Take in the sights and sounds of the Wye River as you meander along its bank from the playground near the general store to the river crossing beyond the Big 4 Caravan Park. Spot native birds and wildlife on this short, easy walk. Note that dogs are not permitted.		Easy	40 mins / 2km Return	Playground next to Wye River General Store	T15	28km	87km
Carisbrook Falls	Walking track leaves the carpark and heads upwards along the eastern side of the gorge with views over Carisbrook Creek, leading to a viewing area giving excellent views of the falls. Best seen after heavy rain.		Easy to Moderate	20 mins / 1km Return	Carisbrook Falls Carpark	R16	12km	70km



Toilets Day Hike Dogs on Leads Permitted Picnic Shelter Picnic Table Wood BBQ Electric or Gas BBQ Cycling Camping Café Fishing

SAFETY & INFORMATION

- Sudden weather changes are common. Carry all-weather clothing.
- Check tide times for coastal walks.
- Consider carefully whether to bushwalk on days of Total Fire Ban.
- Mobile phones are frequently out of range.
- Respect the environment, stay on marked paths.
- Advise someone of your destination and estimated time of return.
- Allow plenty of time - winding roads can double your drive time.
- Some roads are travelled by large log trucks from November to May.